

VELVET Earrings
Design by *Angel Accessories*

Velvet Earrings
Design by Angel Accessories



ATHOS® PAR PUCA® PARIS Enamel Blue

Materials for 1 earring:

- ATHOS® PAR PUCA® PARIS Enamel Blue (3pcs)
- Fireline 4 lb
- Earring hook
- Pearl 4 mm (red 3 pcs, gold 1 pcs)
- Pearl 8 mm (1pcs)
- AMOS® PAR PUCA® PARIS Bronze Rose (3pcs)
- Miyuki Round Roccailles 15/0 (RR 15/0) Metallic Light Bronze
- Miyuki Round Roccailles 15/0 (RR 15/0) Dyed Transparent Red Violet
- Miyuki Round Roccailles 15/0 (RR 15/0) Galvanized Pink
- Miyuki Round Roccailles 15/0 (RR 15/0) Crystal
- Miyuki Delica 11/0 Metallic Bronze
- Toho Round 11/0 Galvanized Aluminium



- The first step in making the earring is assembling the Athos pieces.
- For each piece, the length of the thread should be about 75 cm.
- This will be done exactly like assembling cabochons. The starting base will be 44 Miyuki Delica 11/0 beads.

1



44 Miyuki Delica 11/0

- You will work the first 2 rows with Miyuki Delica beads followed by a row of purple Miyuki RR 15/0 beads.

2



- Because the shape of the pieces is oval, you need to give it a proper shape to hold the piece.
- The next 2 rows you will also work with Miyuki RR 15/0 beads. After the first 5 beads inserted in the row, skip a space.

3



- After inserting another 10 Miyuki RR 15/0 bronze beads, skip a space again. Insert the last 5 beads on this row.
- This way of working them helps you to gather the thread very well. Be careful to give the work a nice shape.

4



- The last row will also be worked with Miyuki RR 15/0 bronze beads.
- The steps from the previous row will be repeated.
- This will be the back of the piece. After finishing the row, bring the needle out to the front. See the marked beads!

5



6



7



- Because the piece is quite tall, you will need to work another row with Miyuki Delica 11/0 beads.
- At the ends of the piece you will insert 2 Miyuki RR 15/0 beads to form the tip that will hold the piece. See the marked beads!
- After forming the tip, you will continue working in turn with Miyuki Delica 11/0 beads.

8



9



10



9 Miyuki Delica 11/0

11



1 Miyuki RR 15/0

1 Miyuki RR 15/0

12



- The next 2 rows you will work with Miyuki RR 15/0 beads.

13



14



1 Miyuki RR 15/0



15



10 Miyuki RR 15/0
purple beads

16



1 Miyuki RR 15/0

17



1 Miyuki RR 15/0

18



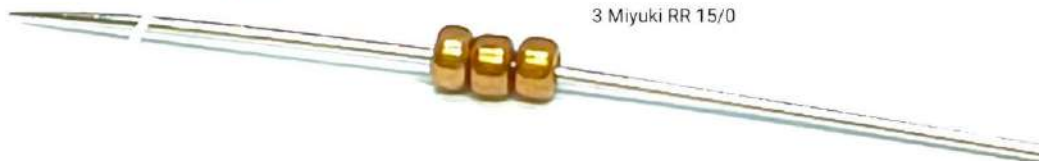
3 Miyuki RR 15/0



19



3 Miyuki RR 15/0



20



21



22



3 Miyuki RR 15/0



23



3 Miyuki RR 15/0



- After inserting the last Miyuki RR 15/0 bead in the row, bring the needle out to the end of the piece. See the marked beads!
- There you will insert a Toho Round 11/0 bead. The choice of the Toho bead was not accidental. Having a wider shape, it fits better in the space at the top of the piece

24



- This being the top piece of the earring, you can attach the 3 Toho Round 11/0 beads to its end, which will connect the following pieces.

25



26



- After inserting the 3 Toho beads, do not cut the thread.
- The thread left on each of the 3 pieces will help you weave the pieces together.

27

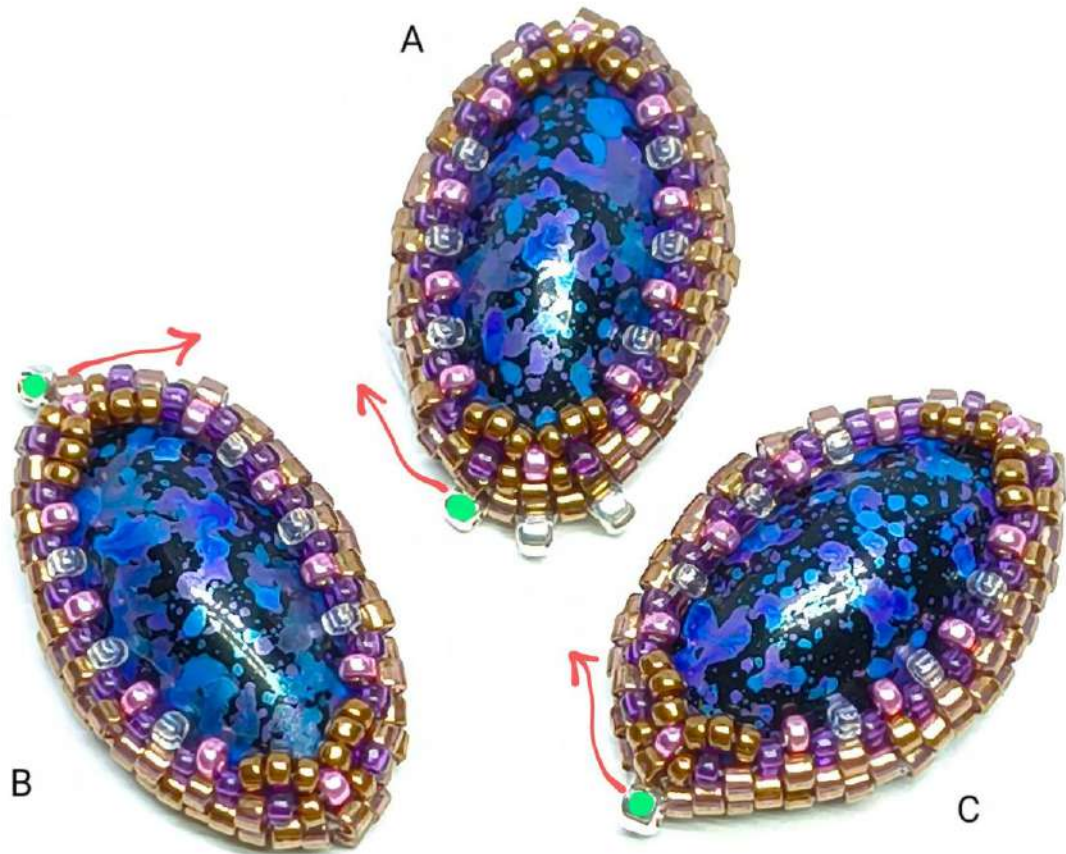


1 Toho 11/0



- This is what the 3 pieces look like.
- The red arrows show the direction you came out with the needle.

28



- To connect the pieces together you need a fairly thin needle and a little experience 😊
- The red arrow shows you where you need to bring the needle out to connect to piece A.

29



30



- After the first connecting point, pass the needle through those 4 beads marked in red. You will insert a Miyuki Delica 11/0 bead in the space marked by the 2 green dots.

31



- The bead marked in blue is the Miyuki bead you inserted previously. It will be followed by the 2nd Miyuki Delica 11/0 bead, which you will insert between the green dots.
- These 2 Miyuki Delica beads will be the connection points with piece C.
- Pass the needle through the red marked beads and come out at the end of the piece. There you will insert a Toho Round 11/0 bead.
- You can continue weaving the remaining thread onto piece B to secure everything you've worked on so far. Arrange the beads in an aesthetic shape, gather the thread after weaving and you can cut.
- You still have the ends of thread left over from pieces A and C that you will use.

32



33

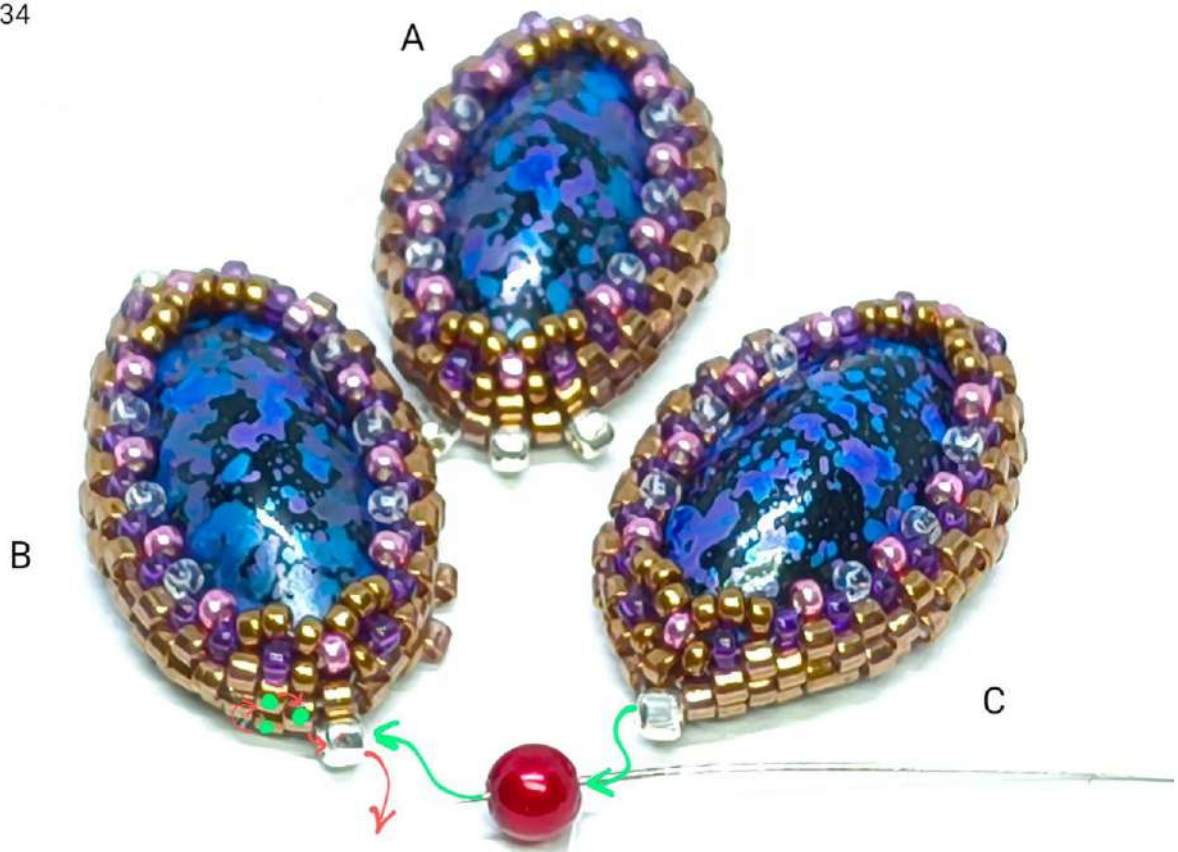


1 Toho 11/0



- Thread the needle with the thread from piece C. Pass the needle through a red bead and connect to piece B, as shown by the arrow.
- After weaving the thread, turn with the needle according to the red arrow and exit through the Toho bead on piece B, before the red pearl.


34



- Insert on the needle 1 Miyuki RR 15/0, 3 Amos beads, 1 Miyuki RR 15/0.
- With these beads you will cover the red pearl between the 2 pieces.

35



- The next step will be a little more difficult. After passing the needle through the beads marked in red, turn the earring over.
- Here you will connect piece B to piece C according to the green arrow.
- After connecting the two, tighten the thread very well and return to the bead marked with the arrow, the yellow one.
-  This step is done slowly, carefully choose the beads you pass through without forcing them.

36



✦ The piece is on the back to better see the connecting points.

- The following steps are for strengthening the 3 Amos beads

37

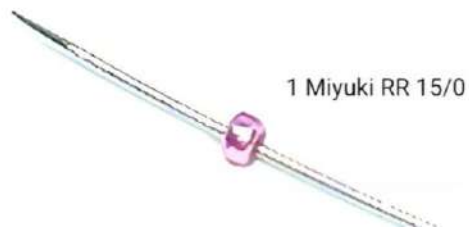


38



1 Miyuki RR 15/0

39



✳ After inserting this Miyuki bead, the picture will return to the front of the work to better see the connection point with the 2 Miyuki beads.

40



2 Miyuki RR 15/0



- After stringing the 2 Miyuki RR 15/0 beads on piece B, weave the thread according to the blue arrow and return with the needle through the Amos bead and exit just after the pink Miyuki bead.

41



- Insert the following group of beads onto the needle: 7 Miyuki RR 15/0, one 8 mm pearl, one 4 mm pearl and one Miyuki RR 15/0 bead.
- Return the needle through the 2 pearls and through the first Miyuki RR 15/0 bead in the group of 7.

42



- With 6 Miyuki RR 15/0 beads on the needle, string the beads onto the Miyuki bead between the 2 Amos. Insert the needle as shown by the red arrow.
- You come out right after the pink Miyuki.

43



- Insert 7 Miyuki RR 15/0 bronze beads onto the needle. Insert the needle into the red pearl, according to the blue arrow.

44



- After you exit the pearl, with 3 Miyuki RR 15/0 beads on the needle, enter the 4th Miyuki RR 15/0 bead in the group of 7, marked in green. Enter according to the arrow!

45



- Insert 3 Miyuki RR 15/0 beads onto the needle and join the group of beads marked in red, according to the arrow. You come out with the needle above the large pearl.

46



- Above the Miyuki RR 15/0 bronze bead you will add a Miyuki RR 15/0 pink bead.

- After completing this step, pass the needle through all the marked beads. Once you have reached the piece, weave in the remaining thread. Before cutting the thread, arrange the beads in a beautiful shape.

47



- Take the remaining thread from piece A and put it on the needle. The Toho bead is already attached. Attach the pearl.
- In photo 48a you see exactly where you attach the pearl on piece A. In photo 48b you see the connection point on piece B.
- After entering the needle on piece B, weave and return through the pearl on piece A. See picture 49!

48a



48b



49



- At the end of the piece, where the Toho bead should have been, attach the earring stud.

50



- Weave the thread carefully until you are in position to attach the second bead. You can find its place more easily by using a pink or clear Miyuki bead on the face of the Athos as a reference point.

51



- ★ Don't forget that you still have to attach the Toho bead between pieces A and C.

- After inserting the pearl, weave the thread towards the tip of the Athos to attach the Toho bead.

52



1 Toho 11/0

- After attaching the Toho bead, weave through the marked beads and turn to the back of the earring.
- Go through all the marked beads, carefully until you reach the Toho bead that needs to be caught.
- Weave in the remaining thread and secure very well. Arrange the beads and cut the thread.

✨ That was it! 😊

53





I hope you like it! 🍀