

DAHLIA Earrings  
Design by *Angel Accessories*

*"Dahlia"*  
Design by *Angel Accessories*



SUPERKHEOPS® PAR PUCA® - PARIS  
ENAMEL PINK

Materials for 1 earring:

- Fireline 4 lb
- Rivoli 12 mm
- Earring hook
- SUPERKHEOPS®PAR PUCA® PARIS ENAMEL PINK (8 pcs)
- Samos®PAR PUCA® PARIS 8pcs (4 pink and 4 violet)
- White jade 4 mm (8 pcs)
- Miyuki Delica 11/0 Purple Iris
- Miyuki Round Roccailles (RR 11/0) Mettalic Light Bronze
- Miyuki Round Roccailles (RR 11/0) Galvanized Aluminium
- Miyuki Round Roccailles (RR 15/0) Dyed Blue Zircon Silver Lined
- Miyuki Round Roccailles (RR 15/0) Crystal
- Miyuki Round Roccailles (RR 15/0) Carnation Pink Ceylon
- Miyuki Round Roccailles (RR 15/0) Dyed Transparent Red Violet
- Miyuki Round Roccailles (RR 15/0) Mettalic Light Bronze
- Toho Demi Round 11/0 Gold Lined

✳ Earring size: length 5.8 cm, diameter 3.8 cm



- The first step in making the earring is to embed the crystal.
- The base will be made on 32 Miyuki Delica 11/0 beads.

1



- You will work the first row with Miyuki Delica 11/0 beads followed by 2 more rows worked with Miyuki RR 15/0 beads.

2



3



4

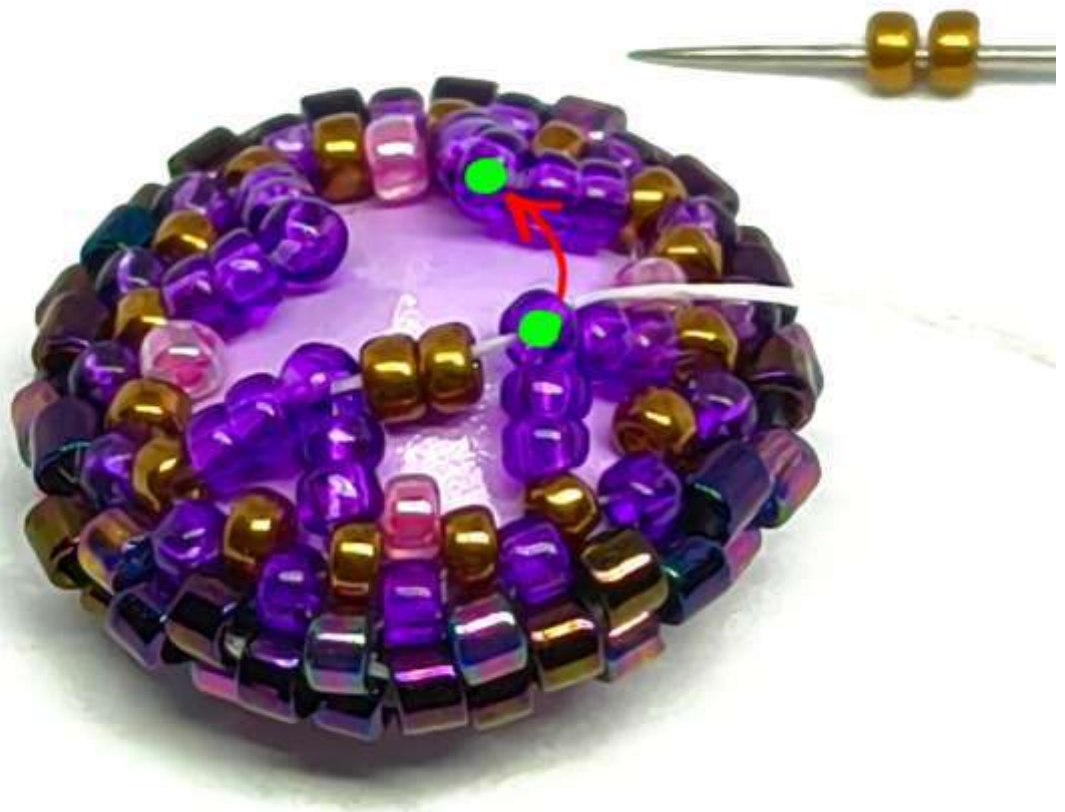


- You will work the back of the crystal entirely with Miyuki RR 15/0 beads.

5



6

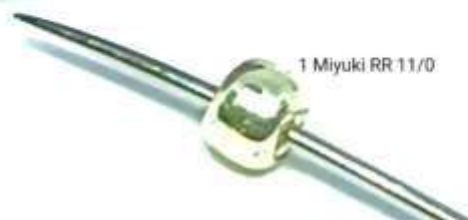


✦ It is preferable to completely cover the back of the crystal to avoid its degradation.

7



8



1 Miyuki RR 11/0

- After you have returned to the crystal face and inserted the first Miyuki RR 11/0 bead, you will begin to work on the actual earring.
- In the next 3 photos you will see the steps to be performed in the next space on the crystal. The first step consists of inserting a Miyuki RR 15/0 and a Super Kheops bead onto the needle.
- Pay attention to the position of the Super Kheop bead!

9



1 Miyuki RR 15/0

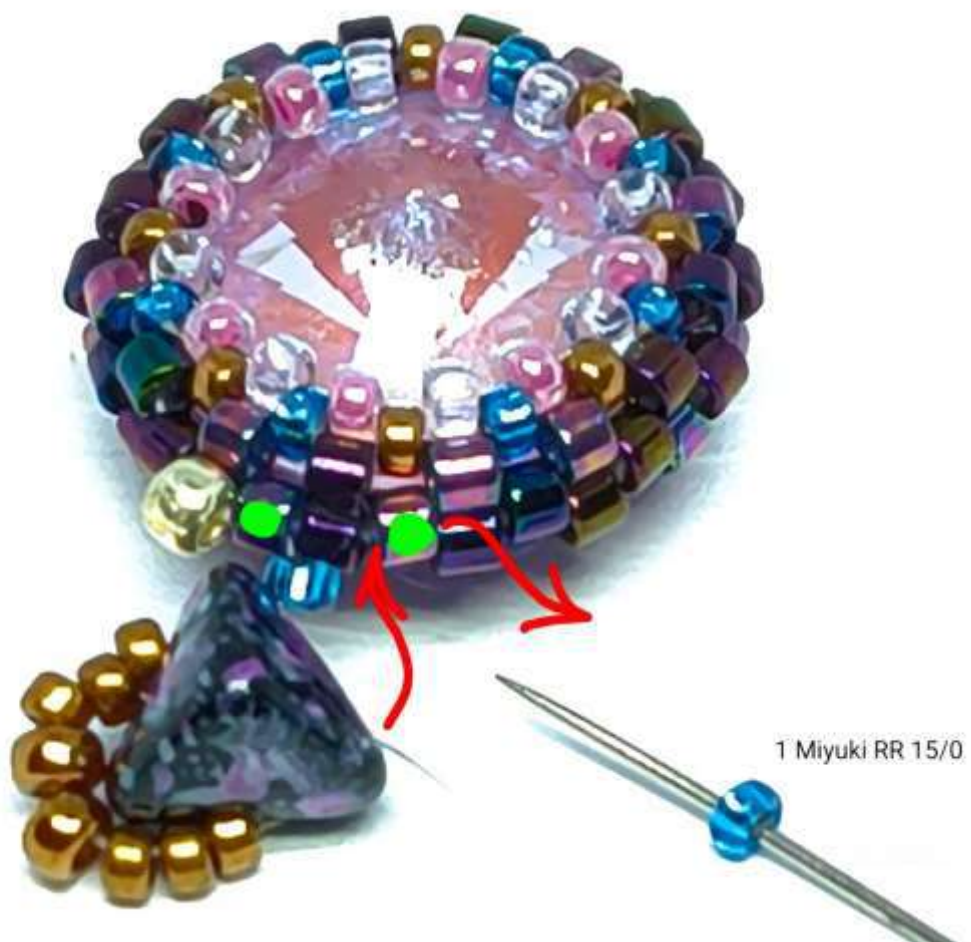
- Cover the tip of the Super Kheops bead with the bead group consisting of 3 Miyuki RR 15/0, 2 Miyuki RR 11/0, 3 Miyuki RR 15/0.

9a



- After you have finished with the Super Kheops bead, insert 1 Miyuki RR 15/0 onto the needle and connect it to the crystal bead base.

9b



- In the next space insert a new Miyuki RR 11/0 beads.

10



- The marked beads represent the workspace for the next steps.
- Repeat the steps for the previous Super Kheops.

11



- ✦ Work the entire surface of the crystal alternating Miyuki RR 11/0 beads with Super Kheops beads.

12



- After you have worked over the entire surface of the crystal, pass the needle through the beads marked in green and exit at the top of the Super Kheops bead.

13



- Between the 2 Miyuki RR 11/0 beads, from the top of the Super Kheops bead, insert 3 Toho Demi Round 11/0 beads.
- Exit the needle after the 2nd Miyuki RR 15/0 bead (see marked beads).

14



- Here you will insert a Samos bead. You will enter with the needle according to the arrow. The entry point will be the 2nd Miyuki RR 15/0 bead on the next Super Kheops bead.
- Come out with the needle pointed between the 2 Miyuki RR 11/0 beads.

15



- As with the previous Super Kheops bead, you will insert 3 Toho Demi Round 11/0 beads on top.
- Bring the needle out through the 2nd Miyuki RR 15/0 bead. See the marked beads!

16



- You will insert a new Samos bead, this time purple.
- Insert the needle into the 2nd Miyuki RR 15/0 bead on the next Super Kheops and exit at its tip between the 2 Miyuki RR 11/0 beads.

17



- Insert 3 Toho Demi Round 11/0 beads and go out after the marked beads where you will insert a new Samos bead, this time pink.

18



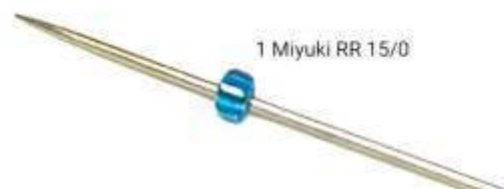
- After you have finished working on the entire surface of the earring and added all the Samos beads, go after the 3 marked beads, above the group of Toho Demi Round beads.

19



- Above the group of Toho Demi Round beads you will add a Miyuki RR 15/0 turquoise bead. You will insert it between the 2 Miyuki RR 11 beads.
- Exit with the needle right after the Miyuki RR 11/0 bronze bead. See the arrow!

20



- After you have exited the Miyuki RR 11/0 bead, take 3 bronze Miyuki RR 15/0 beads on the needle and insert the needle into the Samos bead.

21



- After you have exited the Samos bead, take 3 bronze Miyuki RR 15/0 beads back on the needle and enter the marked Miyuki RR 11/0 bead.
- Bring the needle up above the group of Toho Demi Round 11/0 beads.

22



- Above the group of Toho Demi Round 11/0 beads, insert 1 Miyuki RR 15/0 turquoise.

- Exit with the needle immediately after the Miyuki RR 11/0 bronze bead .

23



1 Miyuki RR 15/0



- If you linked the pink Samos bead with 3 bronze Miyuki RR 15/0 beads, now you link the purple Samos bead with 3 pink Miyuki RR 15/0 beads.
- You will repeat the same steps as for the previous Samos. Pay attention to the colors of the beads to have a beautiful aesthetic.

24



25



3 Miyuki RR 15/0



- After inserting the last Miyuki RR 15/0 turquoise bead above the group of Toho Demi Round beads and tying the last Samos (see diagram!), pass through all the marked beads.
- Bring the needle out onto the pink Samos bead. From now on you will only work over the pink Samos beads.

26



- Take 1 white jade, 1 Miyuki RR 11/0 and 5 Miyuki RR 15/0 beads on the needle and insert it into the gold Miyuki RR 11/0 bead at the bottom, between the 2 Super Kheops beads.
- After you exit the gold Miyuki RR 11/0 bead, return with the needle through the first 3 Miyuki RR 15/0 beads in the group of 5.

27



- After you have finished with the needle from the 3 Miyuki RR 15/0 beads, put 2 Miyuki RR 15/0 beads, 1 Miyuki RR 11/0 and 1 white jade on the needle.
- Insert the needle into the group of 3 Miyuki RR 15/0 beads that connect to the tip of the Super Kheops bead. Pass the needle through all the marked beads until you reach the next pink Samos bead. See the diagram!

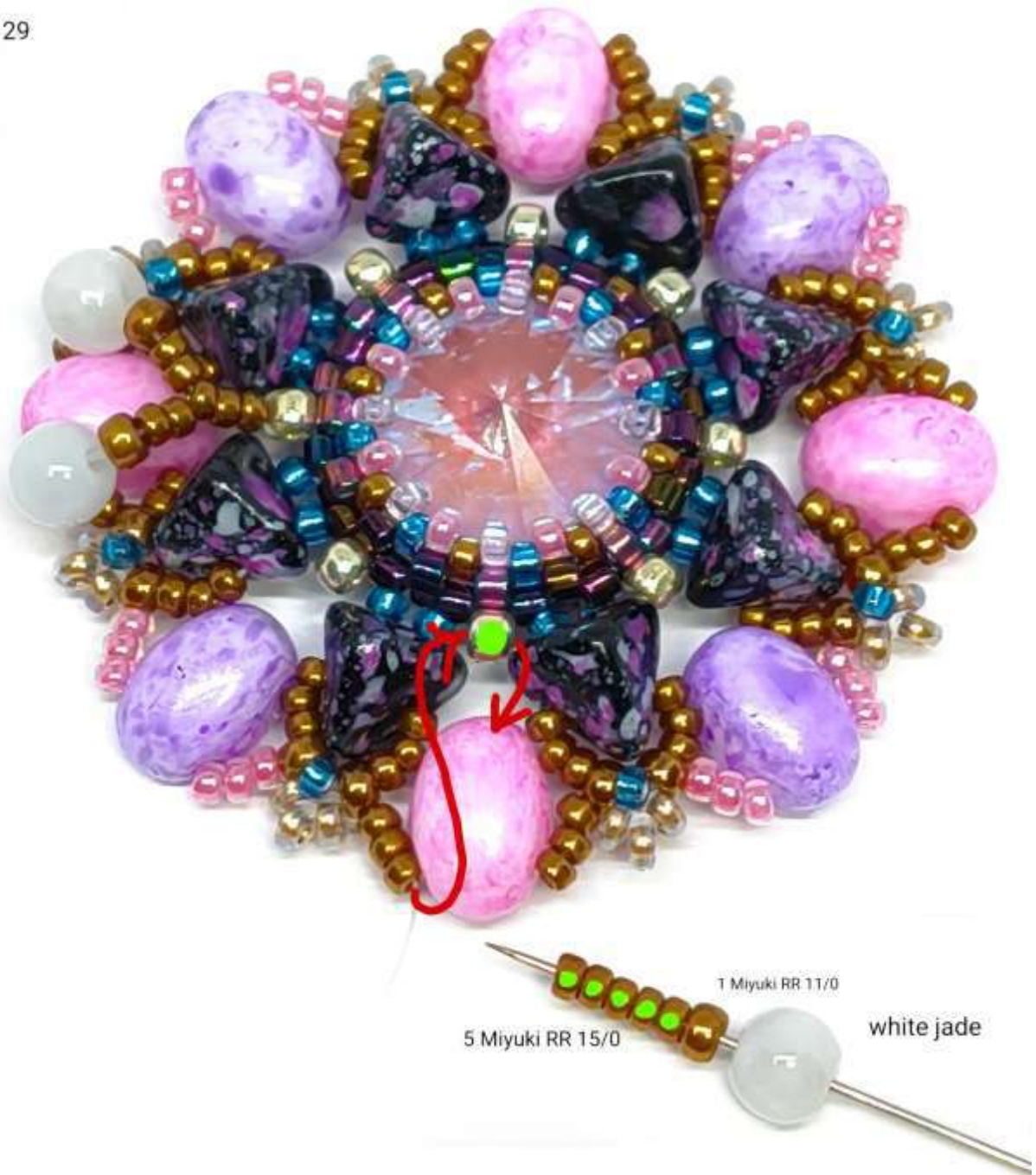
28



- You will follow the same steps as with the previous pink Samos bead.

- Take the same group of beads on the needle and enter the Miyuki RR 11/0 golden bead from the base.
- You will always have the jade beads on top of the pink Samos beads.
- You go back with the needle through the first 3 Miyuki RR 15/0 beads and add the next group of beads to the needle. See the diagram 30!

29



- Repeat the steps for all the pink Samos beads. After you have added all the jade beads to the last pink Samos, pass the needle through all the marked beads and exit the needle at the next pink Samos bead.

30



- You will come out with the needle after those 3 Miyuki RR 15/0 beads that connect to the tip of the Super Kheops bead.
- Here you will string the group of 3 Miyuki RR 15/0 beads to the jade bead.

★ If you're wondering why I didn't work them together with the addition of the jade bead.....

This is the last row of the earring. You will continue to work on top of each pink Samos bead where you will insert a turquoise Miyuki RR 15/0 bead.

The 2 pink Miyuki RR 15/0 beads that connect the group of 3 Miyuki RR/0 to the jade bead will give a beautiful and stable shape to the earring.

31



- After you pass the needle through the jade bead, come out right after the first Miyuki RR 15/0 bead. See the marked bead!
- This is where you will insert the Miyuki RR 15/0 turquoise bead. Be sure to place the beads before tightening the thread.
- Maintain proper tension on the thread so that the earring is tight but also well arranged.

32



- After you have exited the jade bead, take 2 pink Miyuki RR 15/0 beads on the needle and enter the group of 3 Miyuki RR 15/0 connecting beads.
- You will pass the needle through all the marked beads until you reach the next pink Samos bead.

✦ Pattern 34 is turned over on the back of the earring to see exactly the marked beads you need to pass through to the next pink Samos bead.

33



✦ If the beads have been arranged nicely you will be able to pass the needle through very easily. Use a thin needle and go through each bead in turn. Don't try to force them!

34



- When you reach the pink Samos bead, you will repeat the steps.

35





37



- Attach the earring hook above the purple Samos bead.
- Continue working on top of each pink Samos bead by inserting 1 turquoise Miyuki RR 15/0 on top of it.

38



- Continue stringing the jade beads. After you have finished working across the entire surface of the earring, arrange the beads before tightening the thread.
- Weave the end of the thread and secure it very well. Before cutting it, arrange the beads one more time.
- The earring should have a beautiful shape and be very stable.

39



That was it! ✨



I hope you liked it! 🍀