

PATTERN NECKLACE « ESSENZA© »

Les Créations d'Anna®

VST Diffusion 2B



The Cute Polygon - Collection Pastel



This tutorial was designed and offered to you by

Les Créations d'Anna® - VST Diffusion



Les Créations d'Anna - VST DIFFUSION 2B

Materials for the “ESSENZA©” NECKLACE



Seed Beads 8/0 (R8)
Seed Beads 11/0 (R11)
Seed Beads 15/0 (R15)



2 x 12 cm chains
(1 optional extension)



4 Jump Rings



1 Clasp



Fireline 0.12
Thread



Needle 010



The Cute Polygon
FP Selection®
5 Pastel Aqua (C1)



The Cute Polygon
FP Selection®
5 Pastel Petrol (C2)



20 Glass Chevron
Beads
10x4 mm Gold Mat



21 Round Beads 3 mm
Gold Mat (P3)



The Cute Polygon
FP Selection®
5 Pastel Light Brown
Coco (C1)



The Cute Polygon
FP Selection®
5 Pastel Brown/Bronze
(C2)



20 Glass Chevron
Beads
10x4 mm Gold Mat



21 Round Beads 3 mm
Gold Mat (P3)



The Cute Polygon
FP Selection®
5 Pastel Lila (C1)



The Cute Polygon
FP Selection®
5 Pastel Bordeaux (C2)



20 Glass Chevron
Beads
10x4 mm Gold Mat



21 Round Beads 3 mm
Gold Mat (P3)



The Cute Polygon
FP Selection®
5 Pastel Olivine (C1)



The Cute Polygon
FP Selection®
5 Pastel Emerald (C2)



20 Glass Chevron
Beads
10x4 mm Jet AB Full



21 Round Beads 3 mm
Gold Mat (P3)

Making the “ESSENZA©” NECKLACE



1) Place a stopper bead in the middle of the thread, then a Chevron, 1 R11, 1 R8, 1 R11



2) Pass through the 2nd hole of the Chevron



3) Place 1 R15, 1 P3, 1 R15, 1 Chevron



4) Place 1 R11, 1 Polygon (C2), 1 R11, 1 Chevron, 1 R15, 1 P3, 1 R15, 1 Chevron, like this



5) You obtain this. Repeat step 4 three times, alternating the Polygon colors



6) You obtain this



7) Place 1 R11, 1 P3, 1 R11, 1 Chevron, 1 R11, 1 Polygon C2



8) Place 1 R11, 1 Chevron, 1 R15, 1 P3, 1 R15, 1 Chevron, 1 R11, 1 Polygon C1



9) Place 1 R11, 1 P3, 2 R11, 1 R15, 1 Chevron, 1 R11, 1 P3, 1 R11



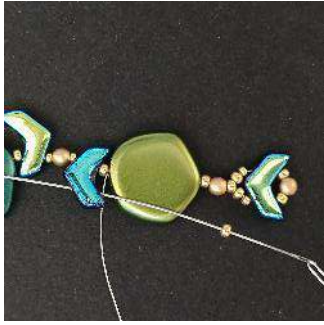
10) Pass through the 2nd hole of the Chevron



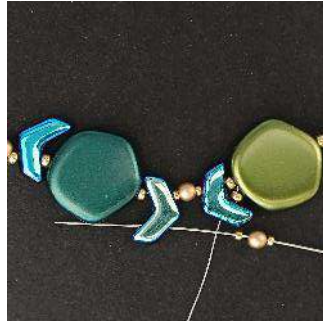
11) Place 1 R15, 1 R11 and pass through the R11, the P3, the R11 and the Polygon



12) You obtain this



13) Place 1 R11 into the 2nd hole of the Chevron



14) Place 1 R15, 1 P3, 1 R15 into the 2nd hole of the next Chevron



15) Place 1 R11 and pass through the Polygon



16) Place 1 R11 into the 2nd hole of the Chevron



17) Place 1 R11, 1 P3, 1 R11, 1 Polygon



18) You obtain this. Repeat step 8 three times, starting with a C2, then alternate



19) You obtain this



20) Place 1 R11, 1 Chevron, 1 R15, 1 P3, 1 R15, 1 Chevron, 1 R11, 1 R8, 1 R11



21) Pass through the 2nd hole of the Chevron



22) Place 1 R15, 1 P3, 1 R15 into the 2nd hole of the next Chevron



23) Place 1 R11 and pass through the Polygon



24) Place 1 R11 into the 2nd hole of the next Chevron



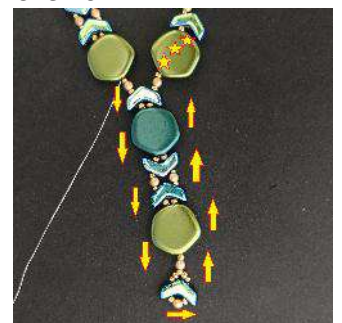
25) You obtain this. Repeat steps 22 to 24 twice; then steps 22 and 23 once



26) You obtain this



27) You are here



28) Pass through all the beads and position yourself in the Polygon.



29) Place 1 R11 into the 2nd hole of the Chevron



30) Place 1 R15, 1 P3, 1 R15 into the 2nd hole of the Chevron, then 1 R11 into the Polygon



31) Repeat steps 29 and 30 all the way through



32) You obtain this



33) Attach the jump rings to the R8 and to the ends of the chains



34) Attach the jump rings and the clasp to the other ends of the chain



35) Congratulations!! Your necklace is finished!!!

When sharing this jewelry piece on social media, please indicate that it was designed by Les Créations d'Anna® – VST Diffusion 2B.

