



Bracelet Tutorial « Michelle » © par PUCA®



Bracelet "Michelle"© par Puca®-Paris



Kalos® Trendy Mat Royal Blue Mat, Trendy Mat Light Olive Mat, Crystal Mat et Light Gold Mat

Made by Puca®





Material : Bracelet 17 cm

- 117 Kalos® par Puca®- Paris
- 2 Cymbals (Pilos)
- 1 Clasp chain with sliding bead or of your choice
- Seed Beads 15/0 (SB15), 11/0 (SB11)
- Delicas 11/0 (DB11) Brilliant or AB
- Fireline 0.12



1) Pick up 3 times this sequence :
1 Kalos, 1 SB15, 1 SB11,
1 SB15



2) Close. Place the Kalos
like that and exit through
SB11 HERE



3) Pick up 1 SB15 through
the second hole of Kalos



4) Pick up 1 SB15 through
central SB11.
Repeat steps 3 and 4 all
the round



5) Here is the result 😊
Exit HERE through SB15



6) Pick up 1 DB11
between each SB15.
All the way around 😊



7) Here is the result 😊
Exit through DB11



8) Pick up 1 SB15, 1 Kalos
and 1 SB15 between each
DB11



9) Here is the result 😊
Exit HERE through SB15



10) Pick up 1 SB11
between each SB15



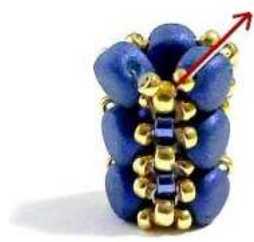
11) Here is the result 😊
Exit through SB11 HERE



12) Repeat steps 3 e 4 all
the round.
Exit HERE through SB15



13) Pick up 1 DB11
between each SB15 as
indicated in step 6



14) Repeat steps 8 to 11.
Exit HERE through SB15



15) Now the end 😊
Pick up 2 SB15, 1 SB11
and 2 SB15 through SB15,
SB11 and SB15.
All the way around 😊



16) Here is the result 😊
Exit through central SB11



17) Pick up 1 DB11
between each central
SB11.
Don't tighten too much!



18) Place the Cymbal
through the SB11 and
DB11 in front. Reinforce
by passing to SB11, DB11
and Cymbal 😊



19) Exit HERE through
SB15 to continue.
For 17 cm length, insert
3 x 39 Kalos.
Finish with steps 15 to 19



20) Place the clasp 😊



21) Another color 😊
One idea ! You can play
with different colors 😊

I wish you a happy beading. I offer you this pattern.

Please do not change its design and only use Les Perles par Puca®- Paris

If you publish or share this pattern, thank you for not forgetting to notify that it is
Puca® who created it.

THANK YOU 😊

