



Tutorial Beaded beads « Lucie et Léa© » par PUCA®



Made by Puca



January 2022 © Puca
www.perlepuca.canalblog.com
PUCA© All rights reserved



Material : for 1 beaded bead Lucie and Léa

- 10gr Kalos® par Puca®
- 24 Piros® par Puca®
- 1 wooden base Jeff par Puca®
- 2 wooden bases Jack par Puca® (earrings)
- 44 Strass Mesh (SM)
- 1 tassel diameter 1 cm
- Metal seed beads 8/0 (Gold R8)
- Seed beads 15/0 (R15), 11/0 2 colors (R11)
- 1 Caps 8 or 10 mm
- 1 Chain 60 cm, 2 rings 4 mm, 1 lobster clasp
- For a bag jewel : 2 charms, 2 bicones 6 and 4 mm, 1 big lobster clasp
- Brass wire
- Fireline 0.12mm
- For earrings : 2 earring findings, 2 teardrops of your choice, 2 eye pins, glue

For "Lucie" beaded bead, take a long thread, we work from half the thread. We work on one side then the other, this will allow you to properly center your work on your wooden base



1) Pick up alternately 16 Kalos and 16 R11, close



2) Exit through 2nd hole of Kalos



3) Pick up 1 R11 between each Kalos, pass through the following Kalos, repeat for the length of the pattern



4) You'll now have this. Exit your 2 threads through each R11 like picture



5) Place your work on the Jeff wooden base. We work on one side and then on the other side



6) Pick up 1 R15, 1 SM, 1 R15, exit through following R11



7) Pick up 2 R15, 1 R11, 2 R15, exit through following R11



8) Repeat alternately steps 6 and 7 for the length of the pattern. Exit through top hole of SM



9) Repeat for the other side



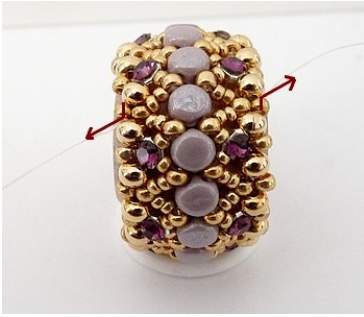
10) Between each SM, pick up 1 Gold R8, exit through R11, pick up 1 Gold R8, repeat for the length of the pattern



11) Repeat for the other side. Exit through R8. You'll now have this



12) Pick up 1 R11, pass through R8. Repeat for the length of the pattern and for the other side



13) You'll now have this.
Exit through R11



14) Pick up 3 R15, exit
through R8. Repeat for
the length of the pattern



15) Repeat for the other
side



16) Pick up 1 R11 color 2,
exit through central R15.
Repeat for the length of
the pattern, and repeat
for the other side



17) You'll now have this.



18) Pick up 3 R15, pass
through R15 and R11
color 2, pick up 1 R15.
Repeat for the length of
the pattern



19) You'll now have this.
Exit through central R15



20) Place the tassel in
your wooden base



21) You'll now have this.
Bead 2 rows of R15



22) Pass your thread
through the tassel to



23) Repeat this step
several times



24) Cut the rope

maintain it



25) Burn the knot. Fold the brass wire in 2



26) Place the brass wire into the tassel



27) Place one cap and 1 Gold R8 through the brass wire



28) Make a cute ring with the brass wire



29) You have finished the beaded bead. You can use it as a pendant or a bag jewel

For the beaded bead « Léa »



1) Pick up 6 Kalos and close. Exit through 2nd hole of Kalos



2) Pick up 1 R11 between each Kalos. Exit through R11



3) Between each R11, pick up 1 R11, 1 Piros, 1 R11, exit through R11



4) You'll now have this.
Exit through 1st R11



5) Pick up 1 R15, 1 SM, 1 R15 and exit through last R11 and Piros. Repeat for the length of the pattern



6) Pass through 2nd hole of Piros. Pick up 1 R11, 1 R15, exit through 2nd hole of SM



7) Pick up 1 R15, 1 R11, pass through Piros. Repeat step 6 and 7 for the length of the pattern



8) You'll now have this.
Exit through R15



9) Pick up 1 R11, pass through R15, R11, Piros, R11, R15. Repeat for the length of the pattern



10) You'll now have this.
Close your work



11) Place Jack wooden base into your work



12) Bead a 2nd element (steps 1 to 8)



13) Place the 2nd element in your wooden base



14) Zip the SM with R11. Exit through R11-R15- Piros-R11-R15. Repeat for the length of the pattern



15) Close your work, you have finished the Lea beaded bead



16) Place one eye pin through the bead



17) Make a cute ring, glue 1 SM in the middle



18) Place teardrops and earrings

Happy beading!
Thank you for respecting my work ©

